

Give shape  
to your big  
ideas

**D.Lab**  
x  
PATTERNINE

# Where tech becomes texture™

Parametric design is a paradigm where the relationship between elements is used to manipulate and inform the design of complex geometries and structures. Yeah, we know. Quite complex, but we promise to make it simple for you.

Pushing past the old boundaries of what solid surface material can do, our D.Lab team partnered up with Craig Woehrle, Founder of Patternine, to machine mesmerizing parametric designs into our material.

Thanks to our highly efficient production lines and D.Lab team, we're pulling out all the stops, prototyping and testing everything. The result is a mind-blowing, swirly, whirly 3D medium for everything from backlit wall panels to groovy furniture.

Is your mind reeling at the possibilities? We knew it would. See just how incredible—and dimensional—your ideas + our solid surface material can be.

Architizer

---

A+PRODUCTS

---

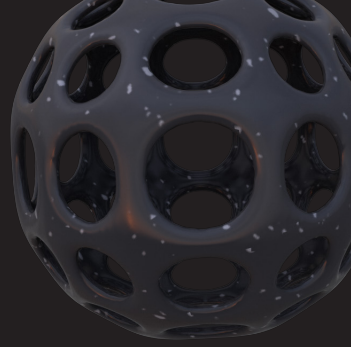
FINALIST  
2022

Architectural  
Record

2022 RECORD PRODUCTS  
OF THE YEAR

**Winner**



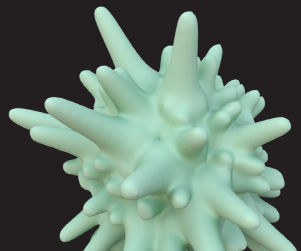


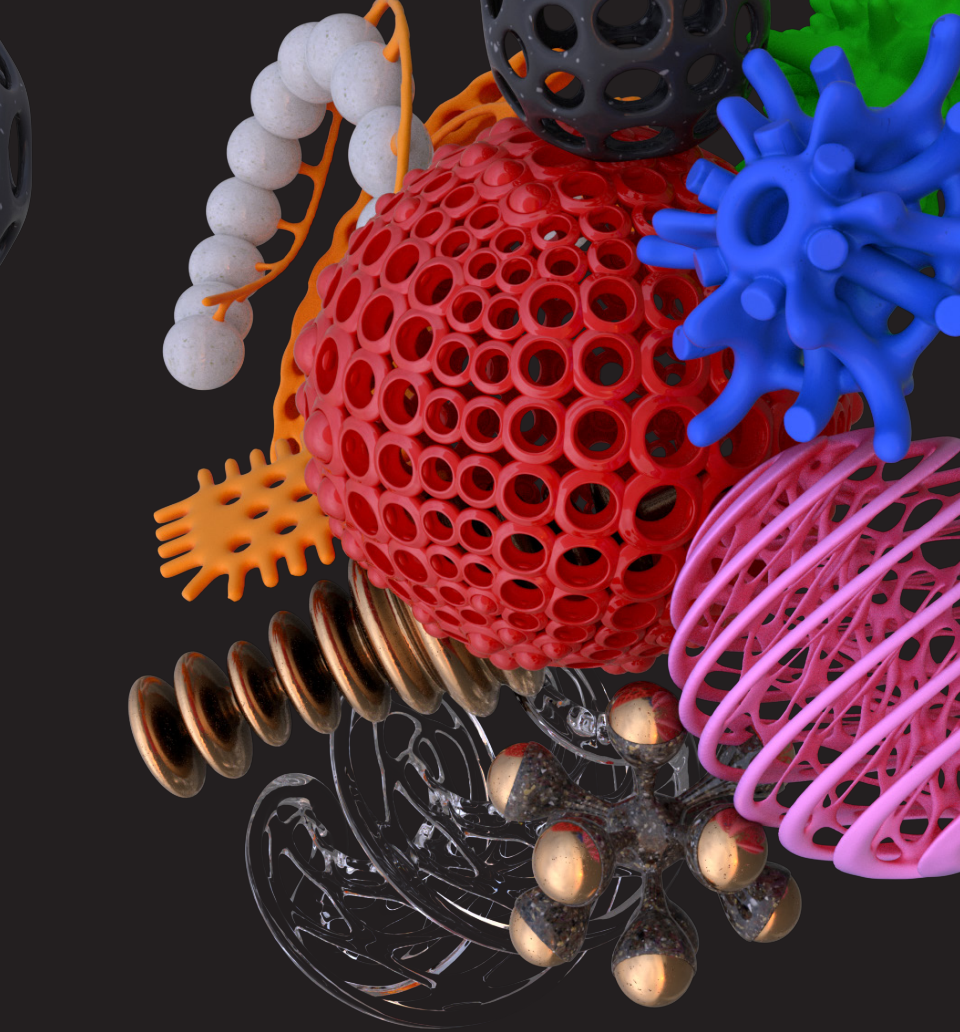
OUR WORLD OF PURE IMAGINATION

# D.Lab

Welcome to the hub where we push the limits of creativity, coming up with impossible ideas and seeing just how possible they really are.

Our collaboration with Patternine is just one example of the many things D.Lab can do for you. We never say never. Instead, we put our heads together and figure out how. Go ahead and dare. Your most out-of-this-world ideas just may come to life right here.





Durasein



SAY HELLO

# Mind bending materials

From his time as an architectural designer, to the development of his very own collection of sophisticated 3D textured patterns for decorative wall cladding, Craig Woehrle has spent years honing his focus in parametric systems and digital fabrication.

A Harvard and Yale alumnus, Craig is a certified smart guy who knows a thing or two about the material world. He founded Patternine as a laboratory for exploring the aesthetic potential of architectural surfaces. His current work marries computational design methods

with digital fabrication to portray the visual effects of patterns on varied finish materials. Craig finds pattern logic (and loveliness) everywhere, from the growth, geology, and fluid dynamics of nature to the machines and geometry of human structures. Micro, macro, and even meta concepts all feed into his compelling work.

Intrigued by the possibilities, we found a way to bring all the energy of his flowing patterns to our solid surface material, showing aspiring dreamers there's nothing the right creative partner can't do.

OUR NETWORK OF MASTER MAKERS

# It's not magic. Promise.

Ok sure, not just anyone can bring complex parametric to reality, so that's why we are assembling an all-star team of the world's most innovative and decorated Fabrication teams within our D.Fab family.

Rest easy knowing this elite group has not only the equipment and know how, but also the creative edge to make any project featuring our parametric system a reality.



**Innovator**



**Maker**



**Tinkerer**

Visit [durasein.com/us/technical](http://durasein.com/us/technical) to find more information on Patternine installation and fabrication.

Industry leading  
fabricators  
experienced with  
thermoforming  
and CNC



**Patternine Preferred**  
Innovators partnering  
with Patternine

Fantastic full time  
fabricators

Small scale  
side hustlers



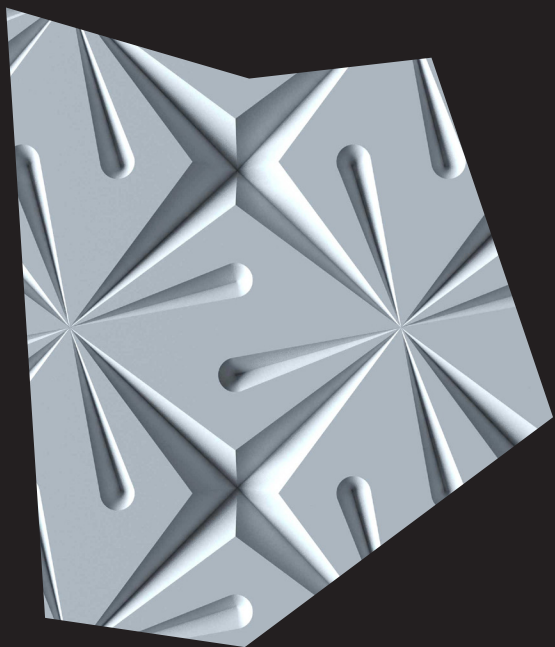
# Surface options



DM1001  
Arctic White

DM1004  
Whiteout

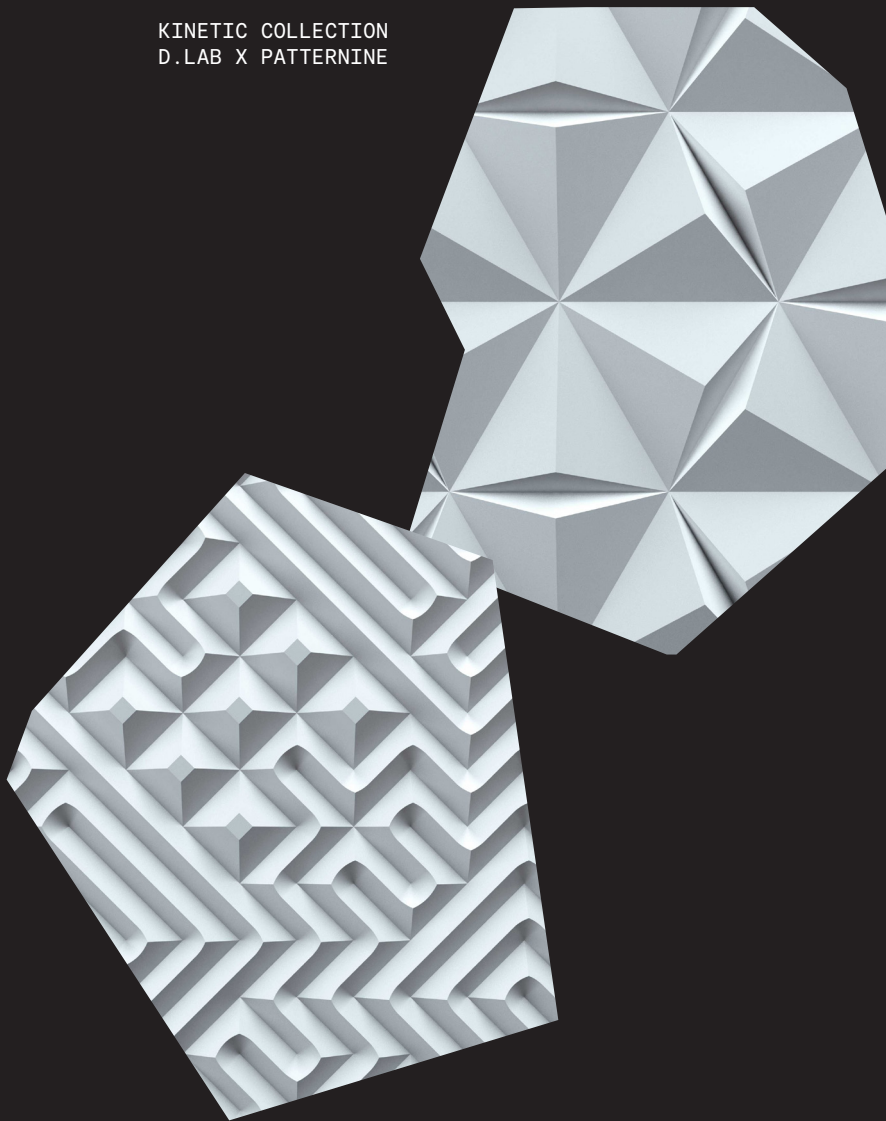
**Durasein**



HYPNOTIC COLLECTION  
D.LAB X PATTERNINE

# Collections

KINETIC COLLECTION  
D.LAB X PATTERNINE



FLUX COLLECTION  
D.LAB X PATTERNINE

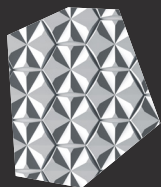
**Durasein**

PATTERNS

# Want more?

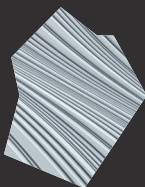
D. Lab x Patternine's dimensional designs invite you to be as dramatic as you dare.

P9-K001



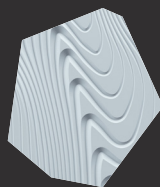
Kinetic Collection

P9-H001



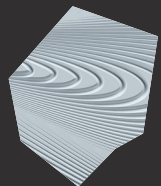
Hypnotic Collection

P9-H002



Hypnotic Collection

P9-H003



Hypnotic Collection

P9-F001



Flux Collection

P9-F002



Flux Collection

P9-F003



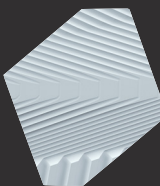
Flux Collection

P9-F004



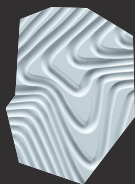
Flux Collection

P9-F005



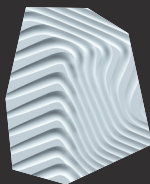
Flux Collection

P9-F006



Flux Collection

P9-F007



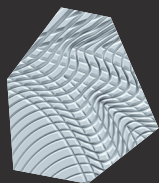
Flux Collection

P9-F008



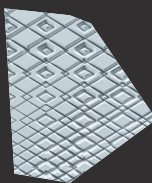
Flux Collection

P9-F009



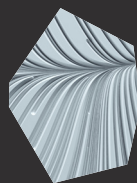
Flux Collection

P9-F010



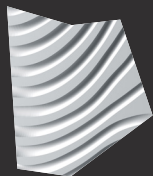
Flux Collection

P9-F011



Flux Collection

P9-F012



Flux Collection

P9-F013



Flux Collection

P9-F014



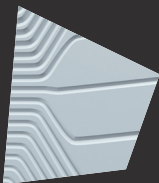
Flux Collection

P9-F015



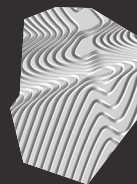
Flux Collection

P9-F016



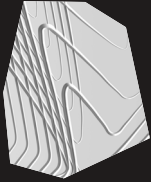
Flux Collection

P9-F017



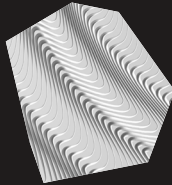
Broadside  
Flux Collection

P9-F018



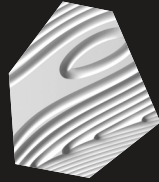
Leviathan  
Flux Collection

P9-F019



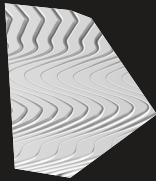
Nor'Easter  
Flux Collection

P9-F020



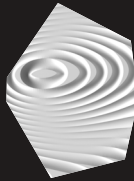
Pelican  
Flux Collection

P9-F021



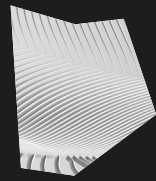
Stormfront  
Flux Collection

P9-F022



Protozoa  
Flux Collection

P9-F023



Thresher  
Flux Collection

P9-F024



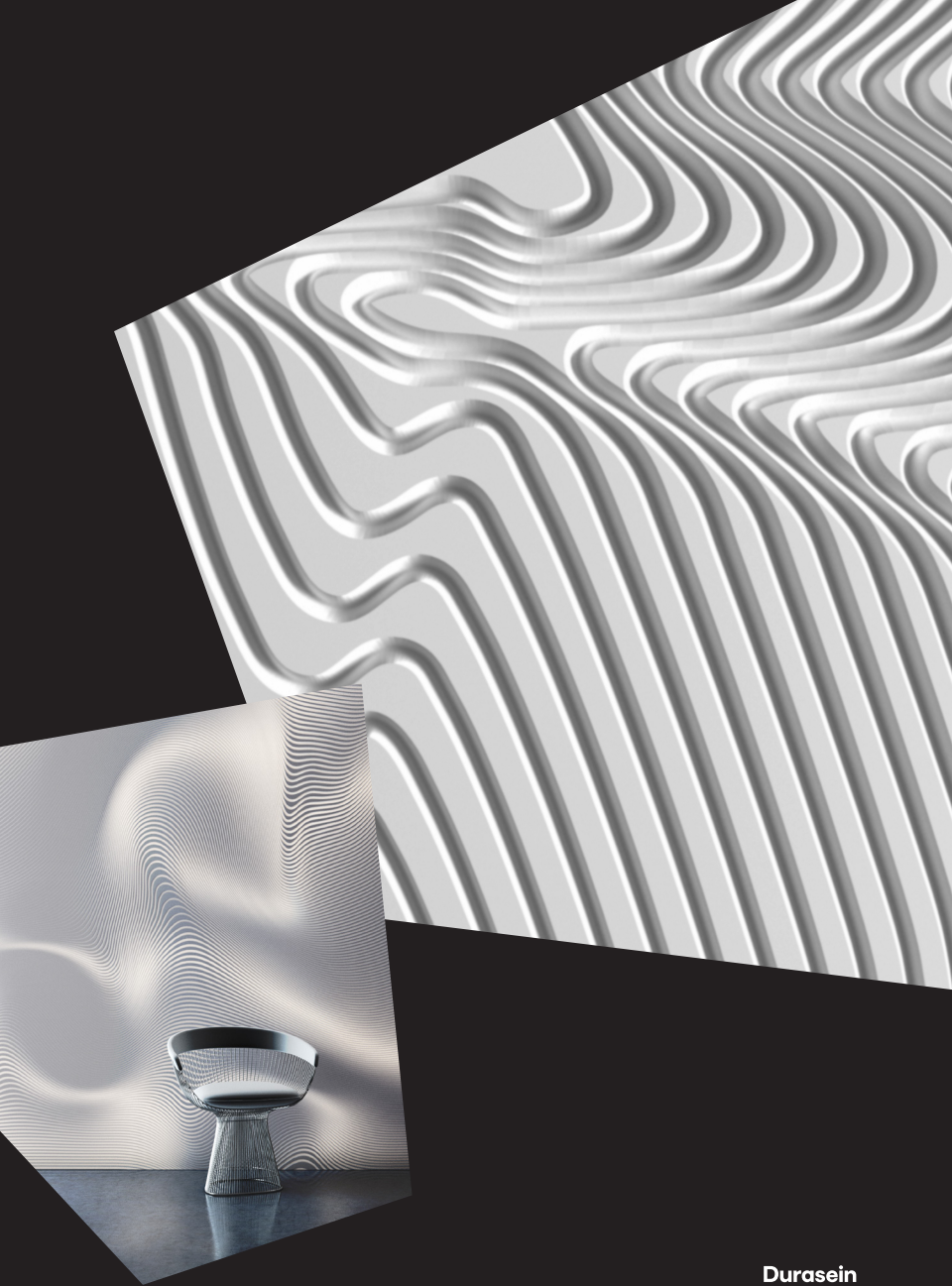
Tidal  
Flux Collection

P9-F025



Gyre  
Flux Collection

Contact us to view  
our archive of more  
than 150 patterns  
or work with us to  
create something  
all your own.



Durasein

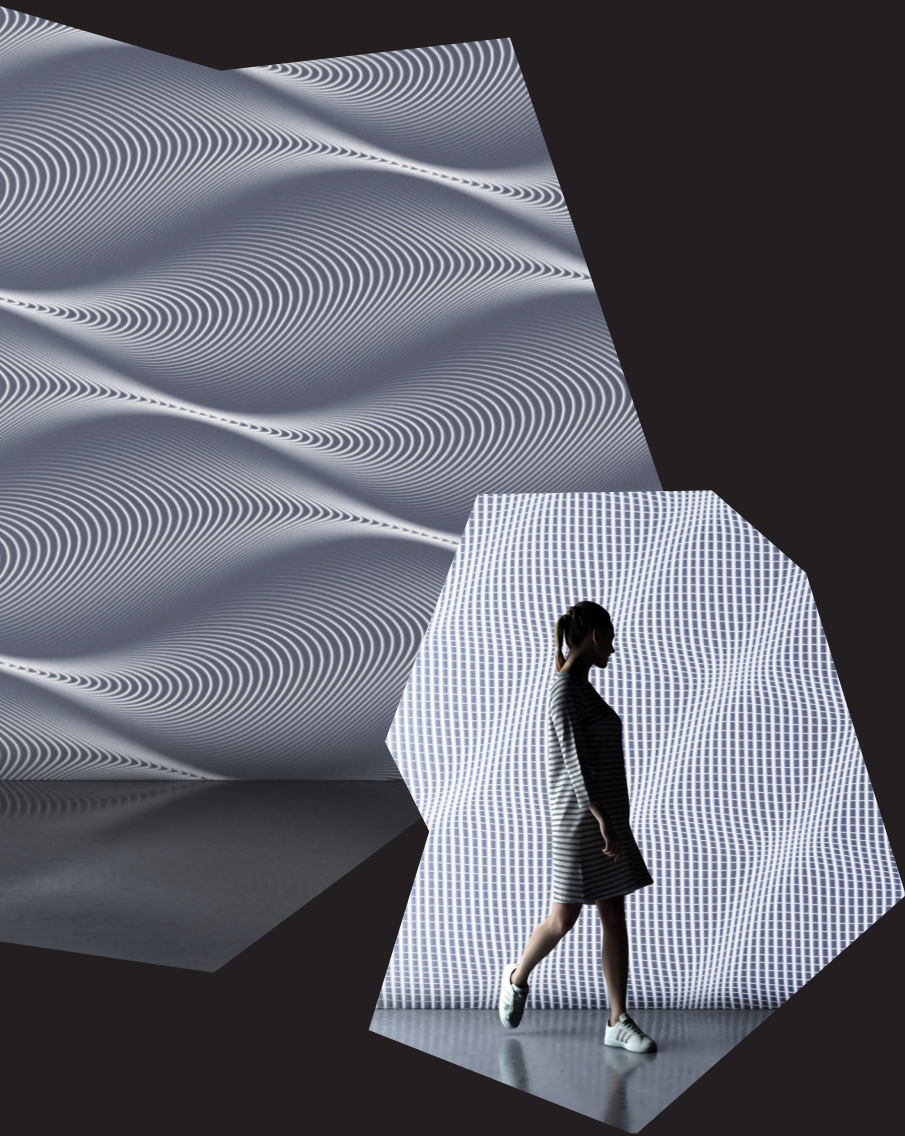
IT'S ELECTRIC

# Dazzling LEDs

The fabrication of our Patternine solid surface lends itself easily to LED installation, opening a whole new world of light, color, and pattern play possibilities.



Durasein





Durasein

FOR THE BIG IDEAS

# Beyond wall panels

In typical Durasein fashion, we'll be kicking things up a notch, too. Thanks to our highly efficient production lines and D.Lab team, Patternine's offering will be expanding far beyond unique one-off applications. Imagine our Patternine designs on a solid surface tub, shower, fireplace, or furniture design. Just you wait to see what we can do.









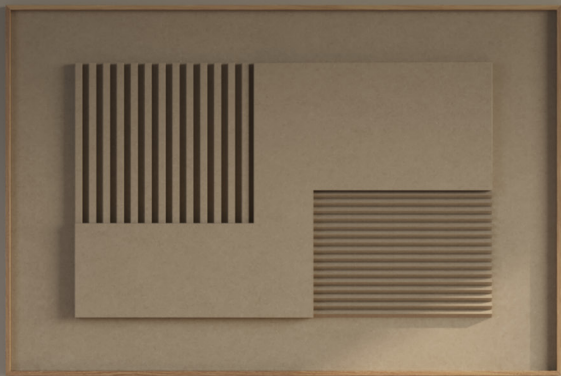
Durasein






Durasein








A large teal-colored geometric shape, resembling a triangle or a parallelogram, is positioned on the left side of the page, extending from the top left towards the bottom right.

Meet the  
material  
behind  
the magic



**Durasein**

DM5013  
Naturally  
Charming  
Collection



HEY THERE

# Built for creatives, by creatives

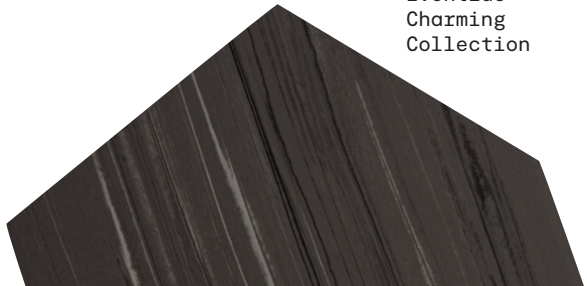
Now this is where we come in. We're Durasein. We make solid surface for people with big, bendy, twisty ideas. Our founders love getting involved, influencing production, and dreaming up new applications for our surfaces. "This might sound crazy..." is our favorite brief.

As solid surface people, creativity runs through our core, driving the work we do everyday. We're helping incredible things come to life in over 55 countries. Shapes, sheets, custom, you name it, we've got it.

Have any questions? Check out [durasein.com/us/about-durasein](https://durasein.com/us/about-durasein).



DM5015  
Eventide  
Charming  
Collection



**Durasein**

WHY SOLID SURFACE?

# Let's get into to the nitty-gritty

We think our material is pretty extraordinary. But, we might be accused of being a bit biased so let's talk about the specs.

Our extraordinary material is made up of two-thirds alumina trihydrate (derived from bauxite, a natural ore) and one-third high performance 100% acrylic resin and pigments. Due to this high mineral content, our material is incredibly dense and "stone-like," yet able to be shaped with standard woodworking tools. And it's totally thermoformable (cough cough, Patternine).

It's beautiful. It's bacteria resistant. It can be seamed together to create virtually any size.

Our 100% acrylic solid surface material is incredibly pliable, durable, and renewable. That means you can shape it into almost anything, it can stand up to whatever you dish out, and it can be resurfaced to like-new condition with just a little bit of elbow grease.

This ease of manipulation allows for a bunch of cool and creative opportunities! All in a dazzling array of shapes and decors. Each equipped with some unique and useful benefits that set it apart from most surfacing materials.

Is your curiosity piqued?  
Cool, we thought so.



### Easy to clean

Low maintenance, stain resistant, and chemical resistant



### Tough as nails

Impact resistant, scratch resistant, heat resistant and fire resistant



### Smart surfacing

Renewable, reusable, repairable and recyclable



### Built for dreamers

Limitless decors; thermoformable, seamless, and boundless ability in color and translucency



### Safe & protected

Food safe, non-toxic, non-porous, bacteria resistant, low VOC, and mold/mildew resistant



### Notable marks

Greenguard, Greenguard Gold, NSF-51, ISO 9001, USGBC, ISFA, and a 10-year warranty





READY TO DIVE IN? LET'S GO.

# Contact us

Customer support  
[info@durasein.com](mailto:info@durasein.com)  
866 509 6494

[@duraseinsolidsurface](https://www.instagram.com/duraseinsolidsurface)  
[durasein.com/us](https://www.durasein.com/us)



US Potternine 11.23